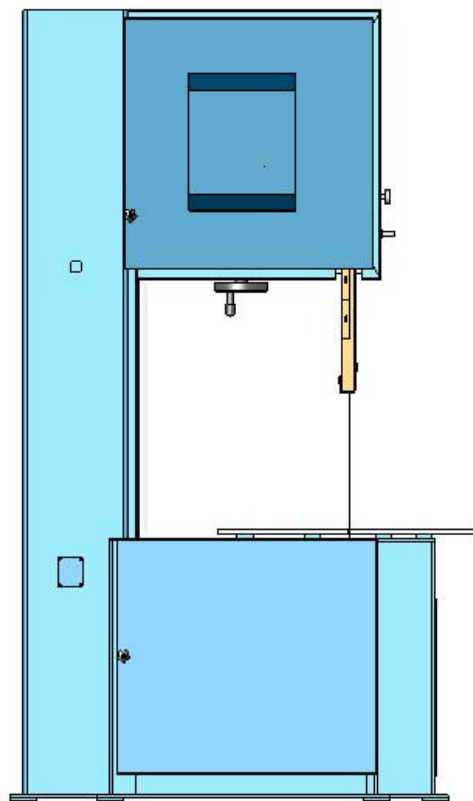


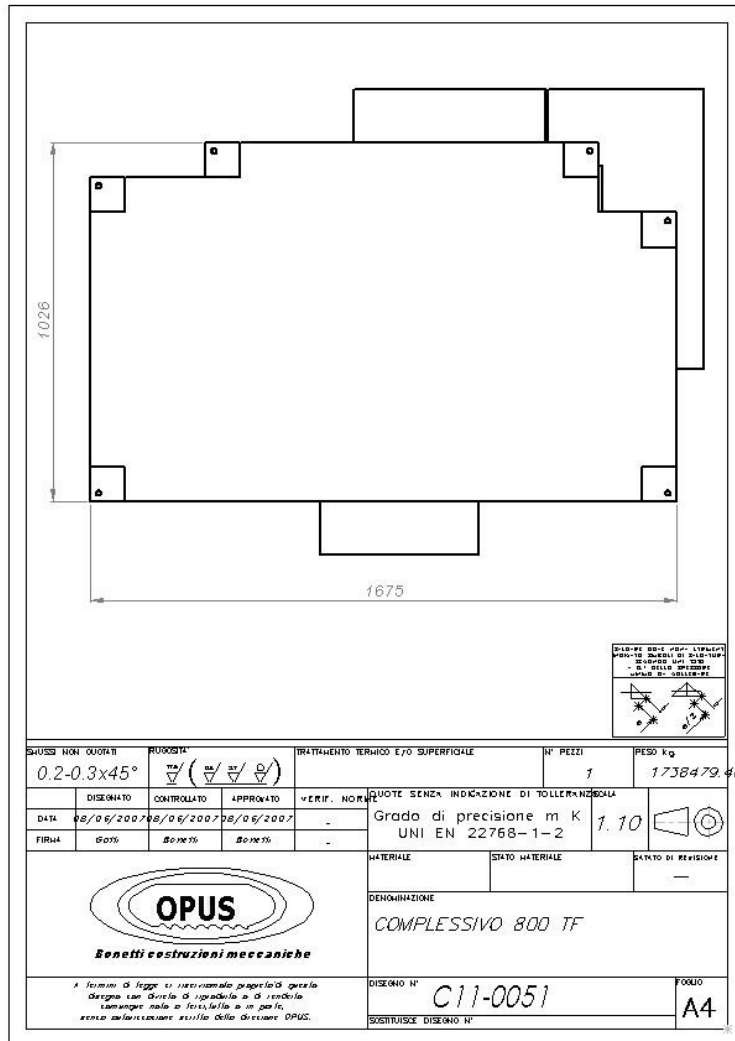
## TECHNICAL SPECIFICATION

Overall dimension	mm	1750X1510X3024
Weight	Ton.	2,1
Capacity	mm	1150X1000
Work high	mm	1042
Wheels diameter	mm	825
Blade size	mm	27X1.3X6500
Table dimension	mm	1150X1000
Blade speed	Mt/min	20 - 200
Table capacity	Ton	0,600
Power	Kw	5,5
Current	A	22
Voltage	--	380 Volt 3Ph + N + PE
Protection	IP	IP55



(Fig 1.2)

# MACHINE OVERALL DIMENSION



(Fig 1.3)